

**Energy of the Future,  
That we can be.**



**Company Profile and  
General Technical data**



**Kazumi (Thailand) Co., Ltd.**

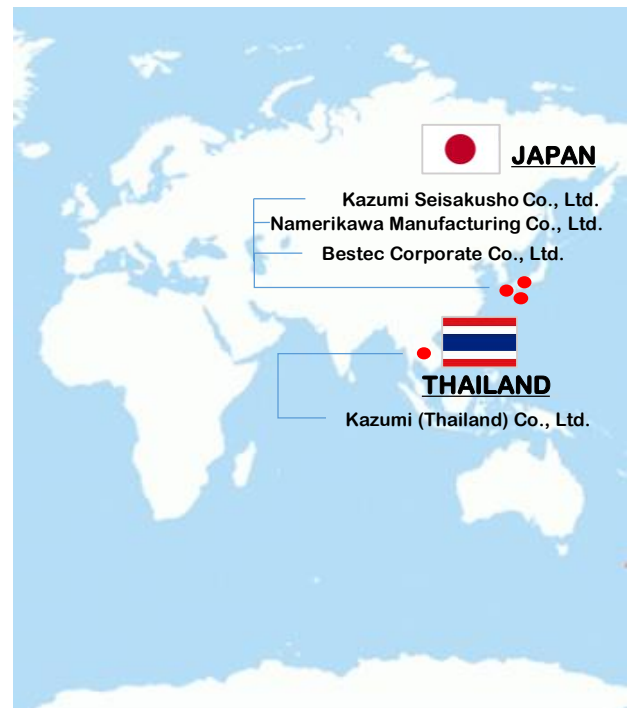
# COMPANY PROFILE



**TTL AREA:** 12 Rai, 25 Square Wah (19,300 SQ.M.)  
**PLANT AREA:** 8,682 SQ.M.  
**EXPANSION AREA:** 10,618 SQ.M

Company Name	Kazumi (Thailand) Co., Ltd.
Date of Establishment	June 6 <sup>th</sup> , 2014
Paid-in Capital	187,000,000 Baht
Representative	Mr. Fukumoto Katsuhiro
No. of Employee	25 Persons ( Max: 55 Persons)
Address	137 Moo 6 Tambol Srimahaphot Amphur Srimahaphot, Prachinburi 25140 Tel: (037) 480709 Fax: (037) 480708
Business line	Panel Radiator
ISO Certificated Following activities	ISO9001:2015 Design and Manufacturing of power and Distribution panel radiator for Transformer
Major Clients	<ol style="list-style-type: none"> <li>1. Tirathai PLC.</li> <li>2. Fuji Tusco Co., Ltd.</li> <li>3. Thai Trafo Manufacturing Co., Ltd.</li> <li>4. ABB</li> <li>5. QTC PLC.</li> <li>6. Kanpacharapol</li> <li>7. QCC Co., Ltd.</li> </ol>

## Group Companies:



# COMPANY POLICY

สร้างสรรค์ผลิตภัณฑ์ด้วยเทคโนโลยี  
และหัวใจ



『Technology + Heart』

Should never forget the responsibility and proudly to  
build our manufacturing by  
develop technology and products wholehearted.

『技術+心』

ものづくりへの責任と誇りを忘れず、  
技術を磨き、心を込めて製品を作ります。

『เทคโนโลยี + หัวใจ』

ต้องไม่ลืมความรับผิดชอบต่อหน้าที่ และความภาคภูมิใจในการผลิตสินค้า  
โดยการพัฒนาเทคโนโลยีและเทคนิคในการผลิตด้วยหัวใจ



# MAP SIDE

**ADDRESS:** KAZUMI (THAILAND) CO., LTD (HEAD OFFICE)  
 137 MOO 6, TAMBOL SRIMAHAPHOT AMPHUR SRIMAHAPHOT,  
 PRACHINBURI 25140 (THAILAND)

**TELEPHONE:** 037-480709 **FAX:** 037-480708



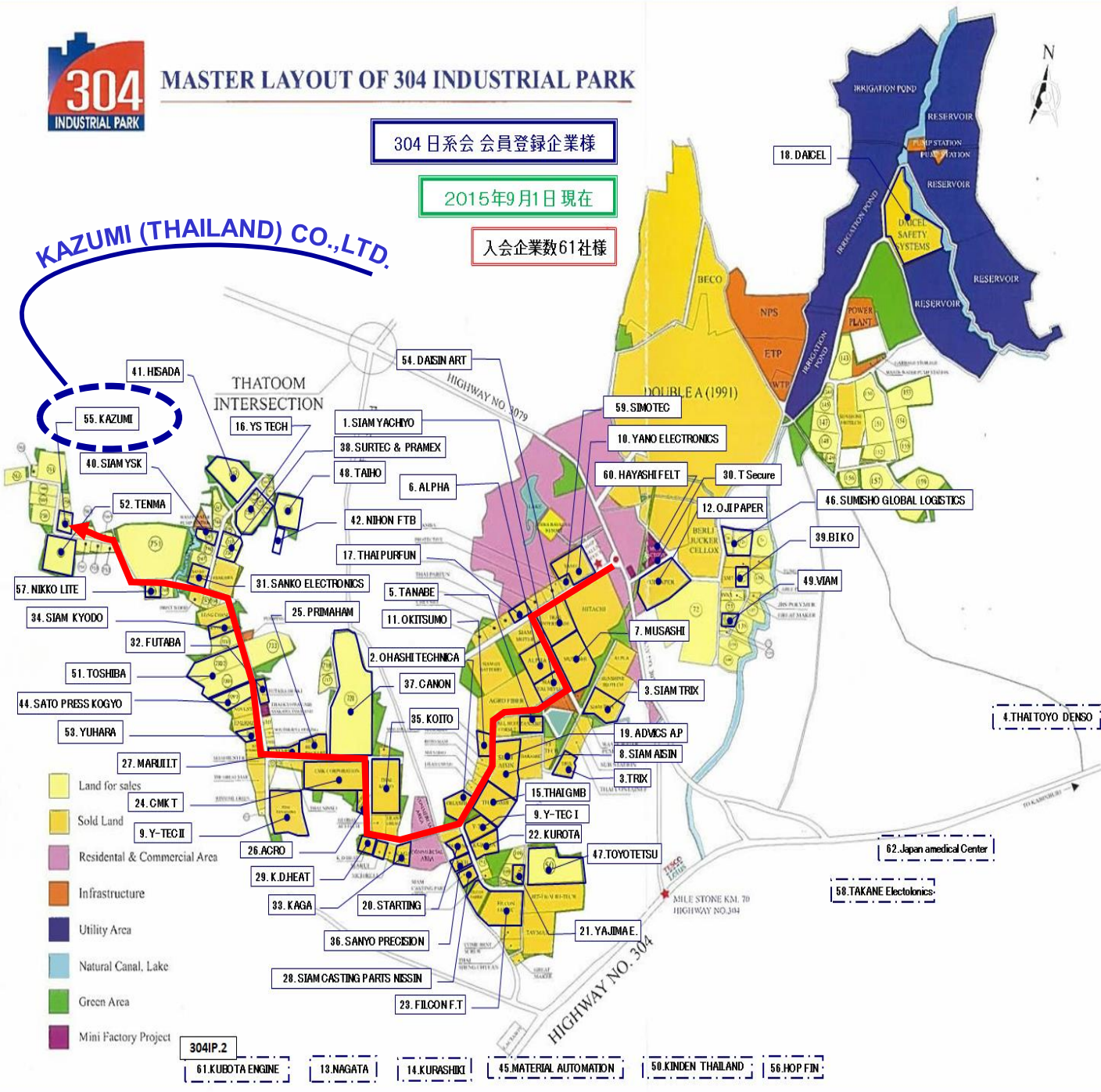
## MASTER LAYOUT OF 304 INDUSTRIAL PARK

304 日系会 会員登録企業様

2015年9月1日現在

入会企業数61社様

KAZUMI (THAILAND) CO.,LTD.



# GENERAL TECHNICAL DATA

Our Radiators are made as per the drawings and specifications of our customers. Each individual enquiry is studied. Generally, our Radiators have the following characteristics:

## Dimensional Characteristics:

- Center distance: from 800 mm to 3500 mm for larger center distances, a branch connection can be made
- Number of panels: from 4 to 36

## Dimensional Drawing:

- ❶ Element thickness: Material SPCC – SD 1mm
- ❷ Flange: Material SS400  
150x150 for manifold diameter 88.9  
170x170 for manifold diameter 108  
Other models on request  
Manifold: Diameter 88.9 or 108 mm, thickness 3.2 mm
- ❸ Header pipe: Material STK400
- ❹ Stopper plate: Material SS400
- ❺ Air Vent: Cap (SCS13) M16\*1.5  
Screw (SUS) M6\*1.0\*25  
Sealing ring (PA6)  
Socket (SS400)
- ❻ Drain : Cap (SCS13) M27\*1.5  
Screw (SUS) M12\*1.75\*25  
Sealing ring (PA6)  
Socket (SS400)
- ❼ Lifting lug: Material SS400 Kazumi standard  
Other models on request
- ❽ Bracing Boss: Material SS400
- ❾ Reinforce: Round Bar Material SS400

## Dimensional Drawing:

Our standard radiators base on European Standard EN 50216-6:2002. A special material must be used are available on request.

# GENERAL TECHNICAL DATA

## Surface Treatment: Before painting

- Surface treatment: Clean up the surface from oil grease and rust and etc.  
Degrease→Rins→Acid→Rins→Surface→Zinc Phosphate→Rins→RO Hot water  
Coating by Phosphate 4-6 Microns

## RADIATOR PRE-TREATMENT PROCESS



## Internal Coating: Paint Method

- ❶ Metal Grip Gray (Epoxy modified paint)  
Vacuum metal grip paint (Kansai) Inside surface  
Thickness dry film 40 Microns.  
Painting interval 18 Hrs.

- ❷ Celerol- Reaktiongrund 914 7802 lichtgrau / light grey  
Industrial serial painting Mankiewicz Gebr.  
Thickness dry film 12 - 15 Microns  
Painting interval 16 Hrs.

## Flushing Method

- ❸ Oil Flushing

## External Coating: Primer Coat

- ❶ Two pack component epoxy (Polyamide rust-preventing primer)  
Thickness dry film 40 - 50 Microns  
Painting interval 18 Hrs.

- ❷ Epicon zinc rich HB-2  
Thickness dry film 40 - 50 Microns  
Painting interval 14 Hrs.

- ❸ Hi-Alkyd lead red oxide (T)  
Thickness dry film 40 - 50 Microns  
Painting interval 16 Hrs.

## Intermediate Coat

- ❶ Epomarin HB-NP (Epoxy modified paint)  
Thickness dry film 40 - 50 Microns  
Painting interval 16 Hrs.

- ❷ Hi-Alkyd lead red oxide (T)  
Thickness dry film 40 - 50 Microns  
Painting interval 16 Hrs.

# GENERAL TECHNICAL DATA

## External Coating: Final Coat

- ① Uny marine 100  
Thickness dry film 40 - 50 Microns  
Painting interval 16 Hrs.
- ② Hi-Alkyd finished (T)  
Thickness dry film 40 – 50 Microns  
Painting interval 16 Hrs.
- ③ Dual component polyurethane with white aluminium  
Thickness dry film 30 Microns  
Painting interval 18 Hrs.

**Total thickness**      **Class of paint on request**

## Kazumi Standard used:

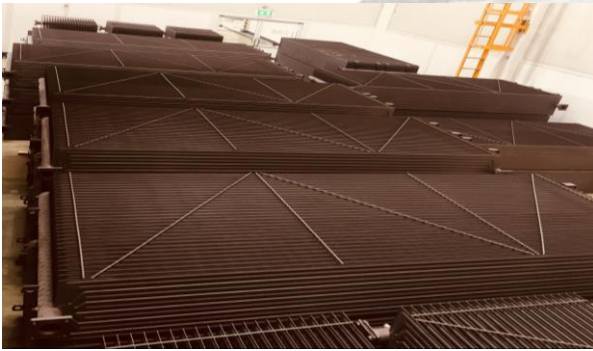
Description	Standard
Transformer radiator (Cooling equipment)	EN50216-6 :2002
Radiator for transformer disuse	DIN42559
Locking pieces for airvent and drain for oil disuse	DIN42558
Classification of environmental condition	JIS C0117/ IEC60721-3-4
Paint system Anti – corrosion protection	ISO 12944 – 1 ISO 12944 – 2 ISO 12944 – 3 ISO 12944 – 4 ISO 12944 – 5 ISO 12944 – 6 ISO 12944 – 7 ISO 12944 – 8
Quality System	ISO9001: 2015



# PANEL RADIATORS PRODUCTS STANDARD



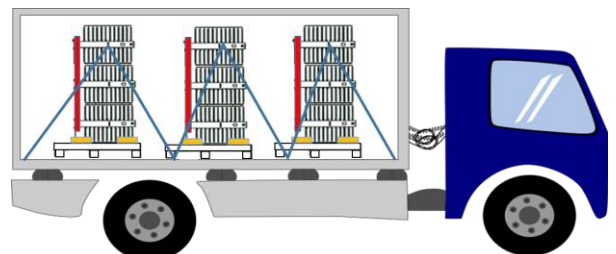
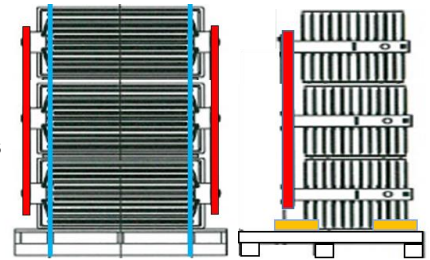
Kazumi offers products to international standard of customer requirements and keep our standard by the European Standard EN 50216-6:2002 has the status of a British Standard



## **DELIVERY SERVICE:**

1) Packing and Pallets per set including with

- |                                     |                                      |
|-------------------------------------|--------------------------------------|
| 1.1) Silica gel 1pcs (50g)          | 1.7) Blank flange 2pcs               |
| 1.2) NBR gasket 2Pcs.               | 1.8) Bolt M16x45, 8pcs.              |
| 1.3) Washer flange side M16, 8pcs.  | 1.9) Nut M16, 8pcs.                  |
| 1.4) Wood 85x85x4m as size products | 1.10) Wood 40x80x4m as size products |
| 1.5) Wood 18x80x4m as size products | 1.11) Steel angle 4pcs.              |
| 1.6) Bolt M10x25 8pcs               | 1.12) Nut M10 4pcs.                  |





# ISO : CERTIFICATE

## Kazumi an ISO9001:2015 company

As of 7 February 2017, Kazumi is an ISO9001:2015 approved company. Kazumi's internal quality management system was assessed by worldwide verification agency, SGS, and complied with the latest standards as set by the ISO Organization. With the company having an effective and accountable quality management system, risks such as late delivery and product failure are minimised. There is a strict focus on risks and opportunities which will impact on customer satisfaction and Kazumi demonstrated a system which works to monitor and improvement as customer required.

Certificate TH17/10001

The management system of

### Kazumi (Thailand) Co., Ltd.

137 Moo 6, Tambol Srimahaphot, Amphur Srimahaphot,  
Prachinburi 25140, Thailand

has been assessed and certified as meeting the requirements of

### ISO 9001:2015

For the following activities

**Design and manufacture of power and distribution panel radiator for transformers.**

Further clarifications regarding the scope of this certificate and the applicability of ISO 9001:2015 requirements may be obtained by consulting the organisation

This certificate is valid from 7 February 2017 until 7 February 2020 and remains valid subject to satisfactory surveillance audits.  
Re certification audit due before 17 January 2020  
Issue 1. Certified since 7 February 2017

Authorised by



SGS United Kingdom Ltd  
Rossmore Business Park, Ellesmere Port, Cheshire, CH65 3EN, UK  
t +44 (0)151 350-6666 f +44 (0)151 350-6600 [www.sgs.com](http://www.sgs.com)

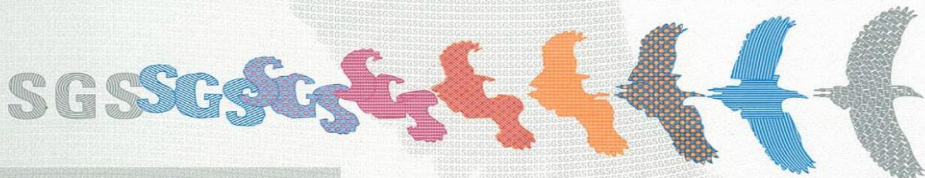
SGS 9001 2015 0216

Page 1 of 1

# SGS



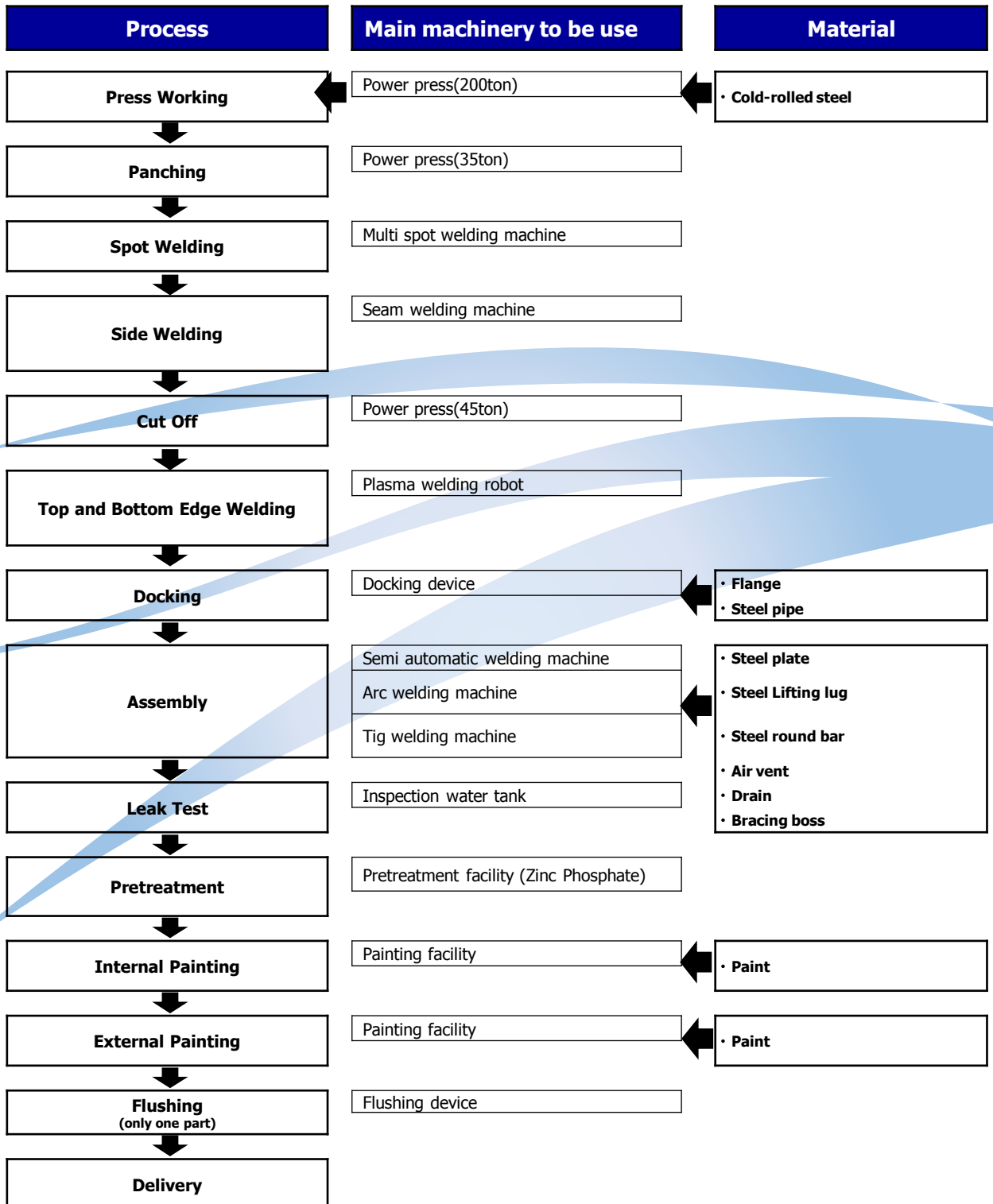
0005



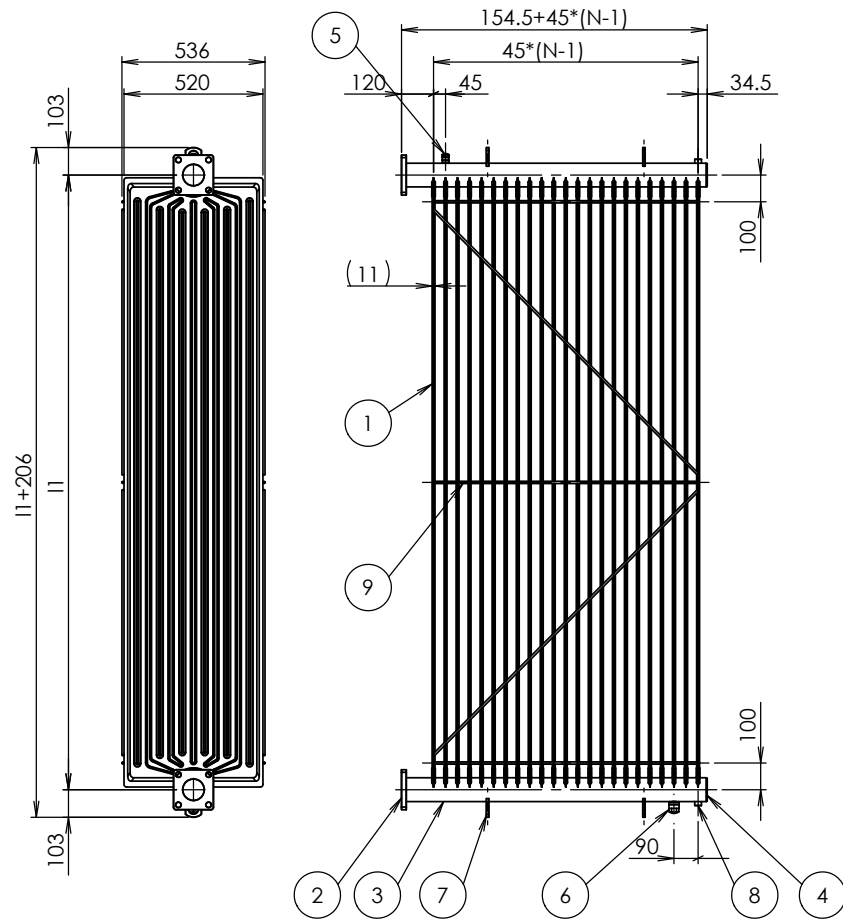
This document is issued by the Company subject to its General Conditions of Certification Services accessible at [www.sgs.com/terms\\_and\\_conditions.htm](http://www.sgs.com/terms_and_conditions.htm). Attention is drawn to the limitations of liability, indemnification and jurisdictional issues established therein. The authenticity of this document may be verified at <http://www.sgs.com/en/certified-clients-and-products/certified-client-directory>. Any unauthorized alteration, forgery or falsification of the content or appearance of this document is unlawful and offenders may be prosecuted to the fullest extent of the law.



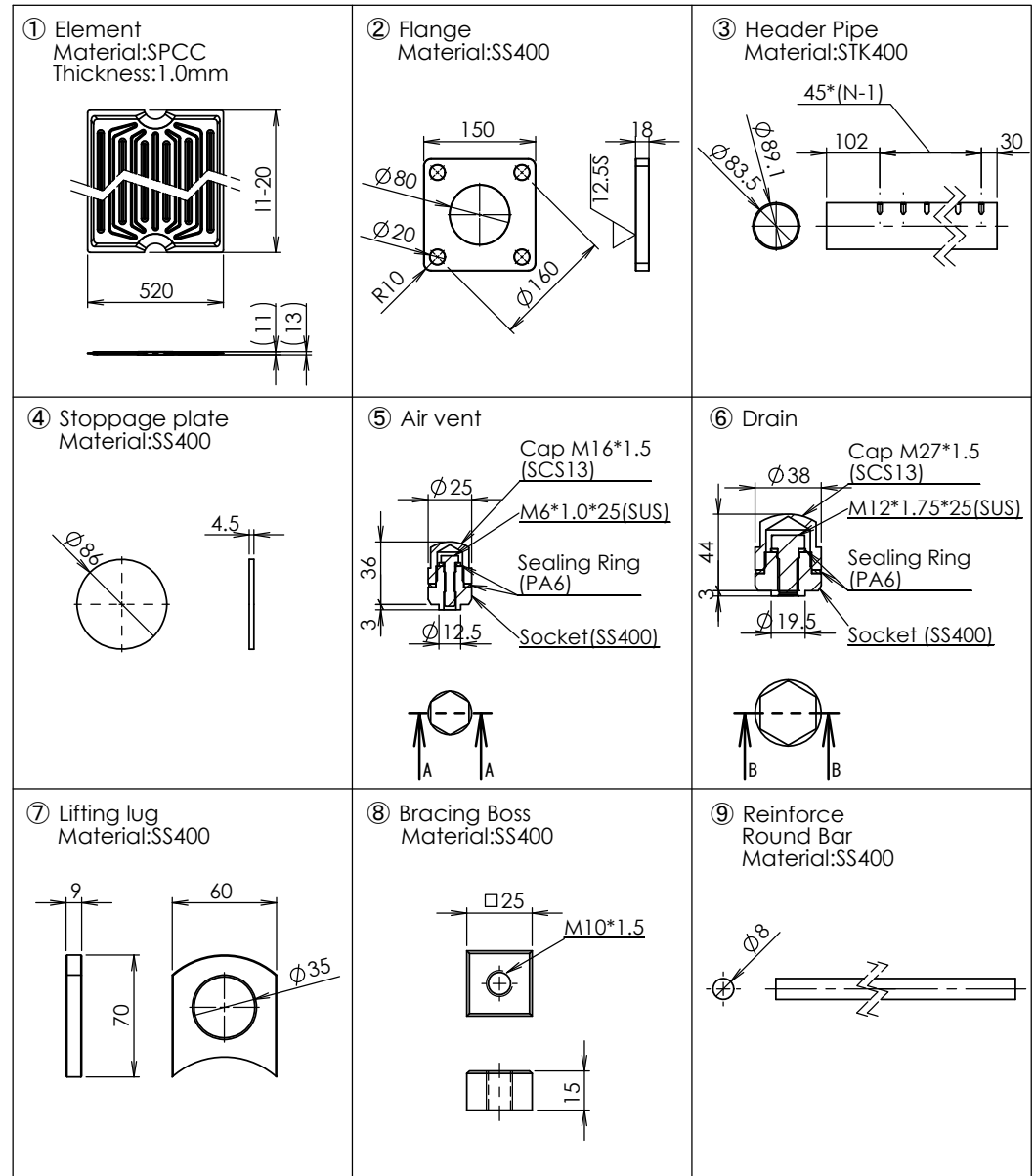
# PRODUCTION PROCESS



## Dimensional Drawing



## Part Drawing



## Surface Treatment

### External Surface:

Pretreatment: Zinc Phosphate  
Under coat: Epoxy Resin Primer  
Top coat: Acrylic aliphatic polyurethane  
Total Thickness: 80µm (Standard)  
and/or  
Synthetic (Alkyd) Primer  
Synthetic (Alkyd) Top Coat  
Total Thickness: 80µm (Standard)

### Internal Surface:

Oil Flushing (Standard)  
Paint: Epoxy Resin Paint

## Product Standard

EN50216-6:2002

Rev.A 11/02/2016 M.Ozaki

DATE	NAME	APPROVED	SCALE
DRAWN 04/10/2015	M.Ozaki		
CHECKD			
CHECKD			

REF. **Kazumi (Thailand) Co.,Ltd.**

**KTW3D-Type  
Panel Radiator**

DWG. No.

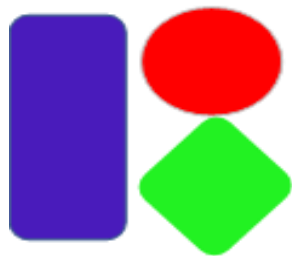
0803-15251

Sheet 1

Rev  
A







**KAZUMI**

**Kazumi (Thailand) Co., Ltd.**

---